



Veeam Cloud Connect

Customer Setup Guide

Index:

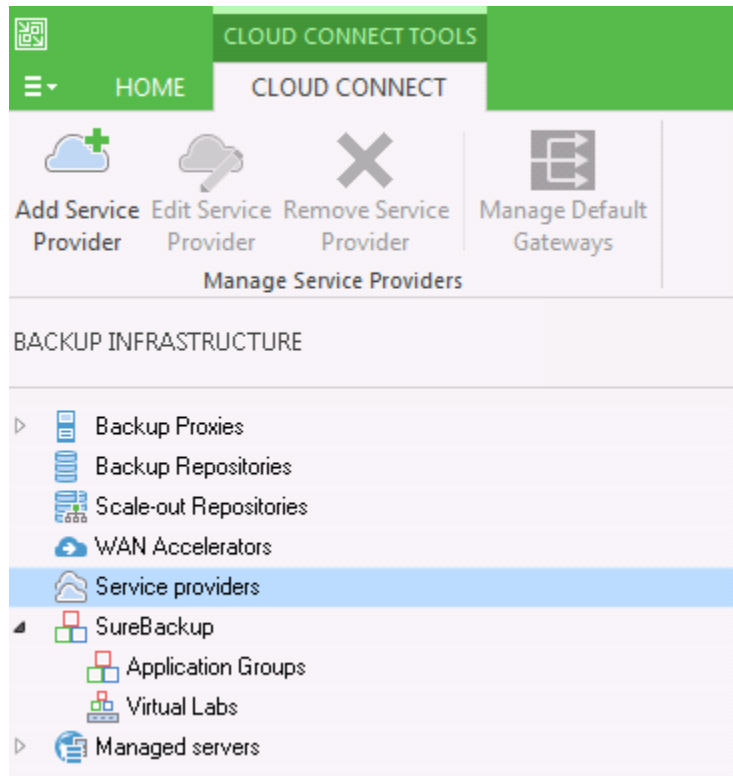
[Version 9](#)

[Version 8](#)



# Veeam Backup and Replication V9

Navigate to the 'Backup Infrastructure' section and select 'Service providers'. Click 'Add Service Provider'.



Type in the DNS name you were given by Virtual Systems, at the time this document was written should be veeam1.vsystems.com or veeam2.vsystems.com

**Service Provider**

Type in DNS name or IP address and a port number received from the service provider. If you are using more than one service provider, add a custom description to more easily distinguish between them.

Service Provider

Credentials

Apply

Summary

DNS name or IP address:  
veeam1.vsystems.com

Description:

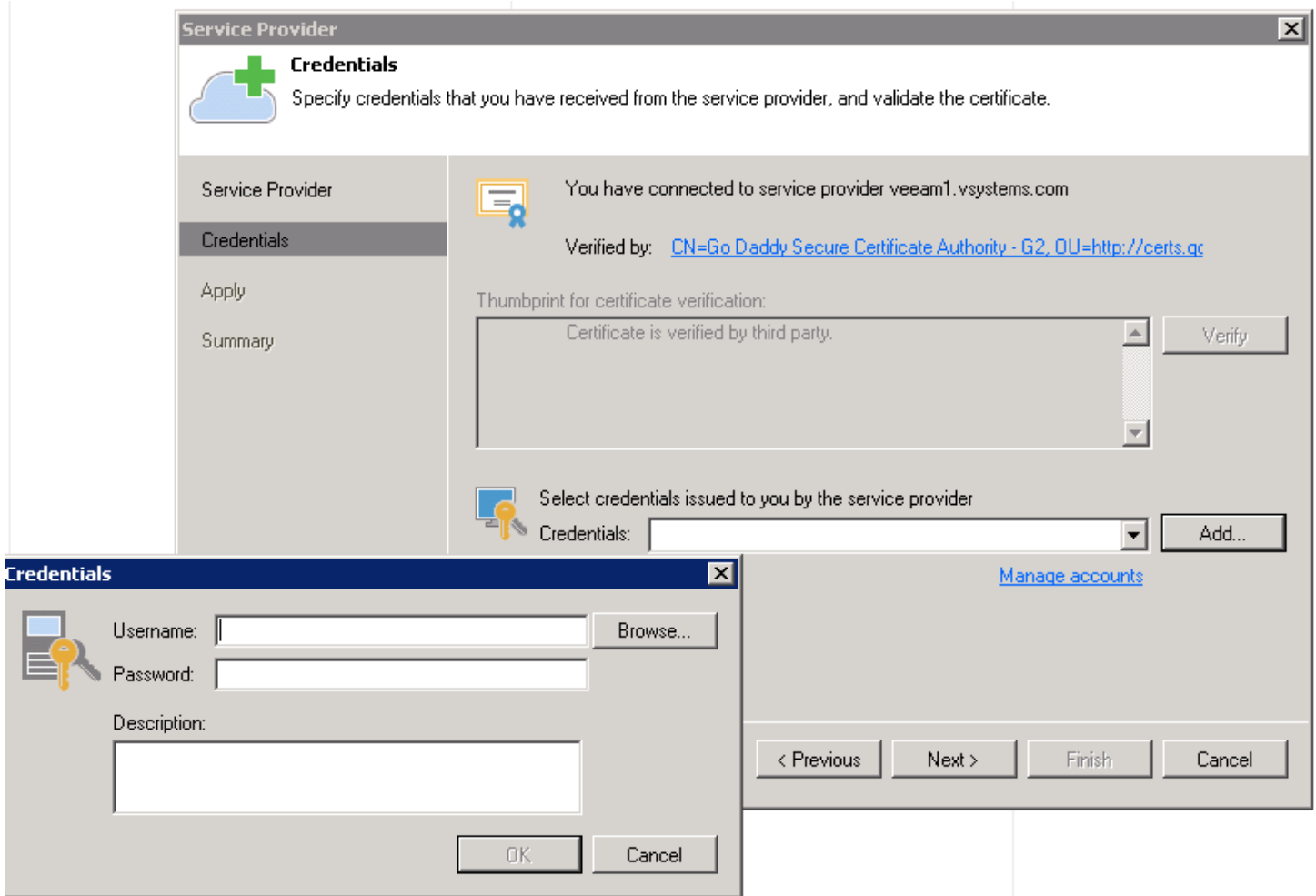
Port:  
6180

Allow this Veeam Backup & Replication installation to be managed by the service provider  
Select this check box if you have managed backup contract with the service provider you are adding, and want to allow it to manage your installation remotely.

< Previous   Next >   Finish   Cancel



The certificate will verify then click 'Add' to save the credentials given to you from Virtual Systems for Veeam Cloud Connect.

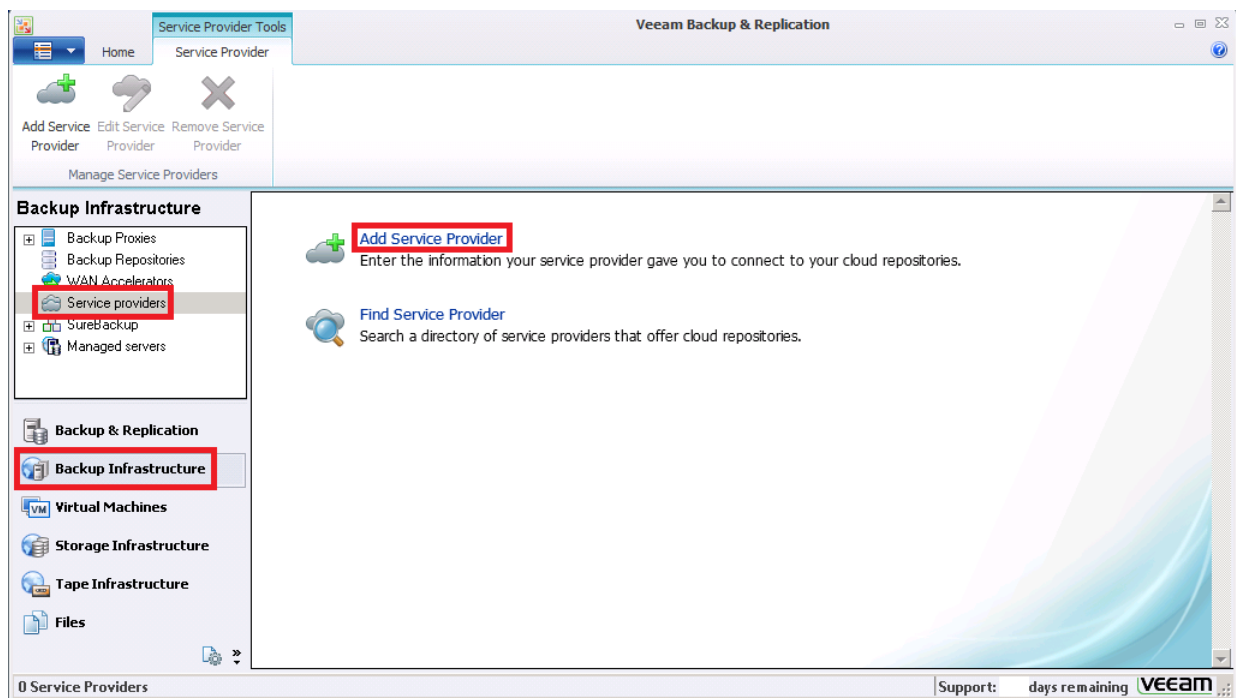


You will then see the repository or hardware plan purchased with us. Click next and the services will have been added to your Veeam server.



## Veeam Backup and Replication V8

In the Veeam Backup & Replication v8 installation at the customer site, the customer goes into the Backup Infrastructure node, Service Providers sub-node, and select to add a new Service Provider. A wizard is started.



In the first step, the customer inputs the DNS name configured with Round Robin by the Service Provider. Unless the TCP port has been changed by the Service Provider, no configuration is needed here:

The screenshot shows the 'New Service Provider' dialog box with the 'Service Provider' tab selected. The 'DNS name or IP address' field contains 'veeam1.vsystems.com'. The 'Description' field contains 'Virtual Systems Service Provider repository.'. The 'Port' field is set to '6180'. The 'Next >' button is highlighted.

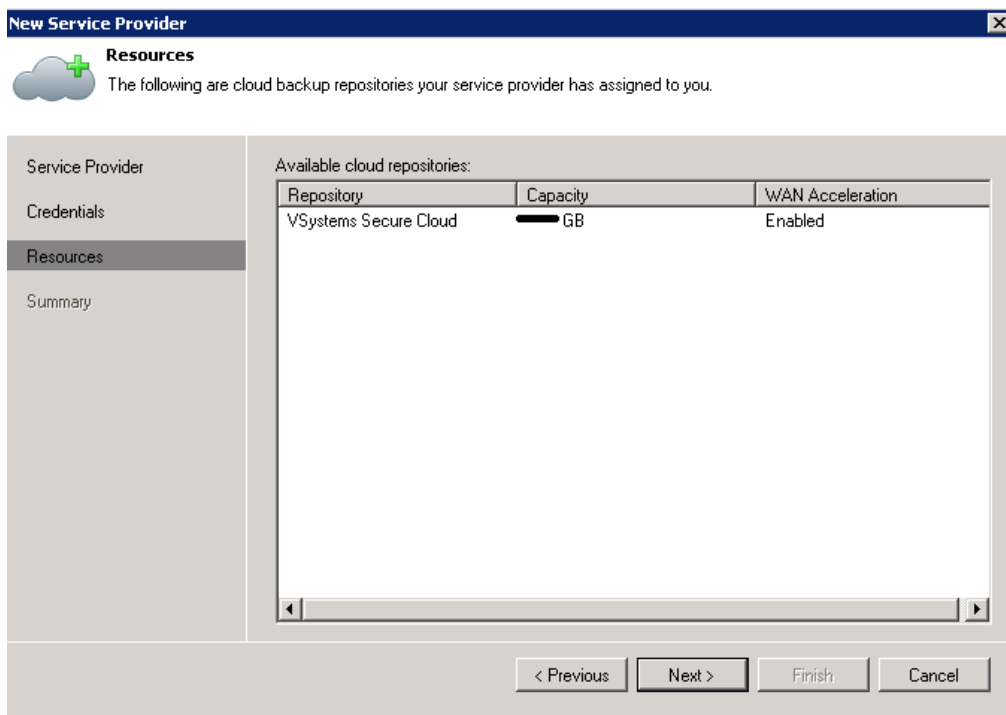
When hitting the Next button, Veeam Backup & Replication connects to one of the Cloud Gateways and retrieves the SSL certificates:

The screenshot shows the 'New Service Provider' dialog box with the 'Credentials' tab selected. It displays a certificate verification message: 'You have connected to service provider veeam1.vsystems.com'. The 'Verified by' field shows 'CN=Go Daddy Secure Certificate Authority - G2, OU=http://certs.gd'. A 'Verify' button is present next to the thumbprint field. Below, the 'Credentials' dropdown menu is set to 'VeeamTest (VeeamTest, last edited: 2/27/2015 10:49)'. The 'Next >' button is highlighted.



The certificate is issued by a recognized Certification Authority, so no security warning is raised. In the same step of the wizard, the customer will add the username and password created for him by the Service Provider.

By hitting Next again, Veeam Backup & Replication login into the Cloud Connect infrastructure with the given credentials, and Cloud Connect returns the resources the user is entitle to consume:



When the customer completes the wizard, the service provider is registered in the corresponding section: and even more important, the Cloud Repository is registered under the available backup repositories of the user and can be used as a target for backup and backup copy jobs:

